



LAB TWIN SCREW EXTRUDERS

(Plastics & Food Applications)



MEGA-25 Lab
with Microprocessor
& other scientific
instruments 7.5 Kw
Motor. 10-15 Kg/h*

Laboratory model has 25mm Screws with output capacity approx. 10-15 Kgh. It is fitted with scientific accessories, pressure transducer for monitoring melt pressure & also display screen and microprocessor to check and store all important process parameters+. Standard LD Ratio 42:1. Suitable for most applications.

This machine is most ideal for Research & Teaching Institution and also small production.

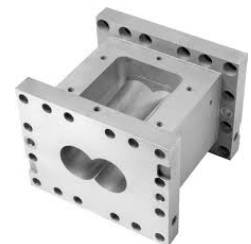
Can be used for polymer mixing trials as well as food applications to test various recipes.

+optional



Specifications:

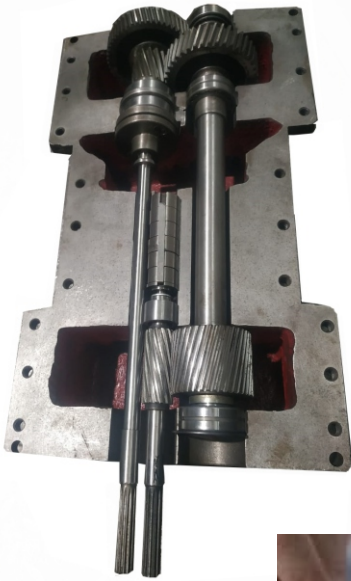
- | | |
|---------------------------|---------------------------|
| 1. Model No. | : MEGA-25LAB |
| 2. Approx. screw dia. | : 25mm. |
| 3. Screw LD Ratio | : 42:1 |
| 4. No. of Barrel segments | : 8 Nos (7 Heated) |
| 5. Screw channel depth | : 4.5mm |
| 6. Do/Di Ratio | : 1.56 |
| 7. Motor power AC | : 7.5 Kw |
| 8. Max. output/hour* | : 10-15 Kgs. |
| 9. Gear Box Centre dist. | : 21mm. |
| 10. Heater power total | : 14 Kw |
| 11. Vent Ports | : 2 (One vacuum, one atm) |





LAB TWIN SCREW EXTRUDERS

(Plastics & Food Applications)



We use Co rotating Gear Box with helical gearing and high capacity axial bearings to absorb heavy thrusts in small space. Hardened and ground gears are standard.



VARIOUS SEGMENTS FIT ON SPLINE SHAFT IN SUITABLE CONFIGURATION

These co-rotating Lab scale TSE are ideal for all thermoplastics, as well as many food applications.

Biodegradable pellets from thermoplastic and starch combination and also many polymer mixing tasks with PE, PP, PS, ABS, Nylons, PC, Acetals, PVA, many more...Food applications using cereals Rice, Tapioca, Maize, Wheat Millet, Soybeans into various shapes using dies. Low, Medium or High shear mode. to get desired degree of cooling.

The side feeder permits adding some additives downstream...that could'nt withstand high shears/temperature during whole pass.

Overload coupling dis-engages the drive to screws...to prevent damage during overloading.

The Screw and Barrel segments are made out of special alloy with high hardness for long life and abrasion resistance. Stainless steel screws are also supplied for special food applications.

We have rich experience of over 30 years... making Extruders for various process industry...Plastics, Food, Rubber, Clay, Reactive compounding... many more. You can safely bank upon us...

Manufacturers:

MALIK ENGINEERS

Unit-1, Shailesh Ind. Estate-1, Navghar, Vasai(East)-401 210, M.S., India.

Off: B-203, Atlanta, Evershine nagar, Malad(West),Mumbai-400 064, India. Tel:+912249612328

Email: info@malikengg.com website: www.malikengg.com (M:+919821676012)